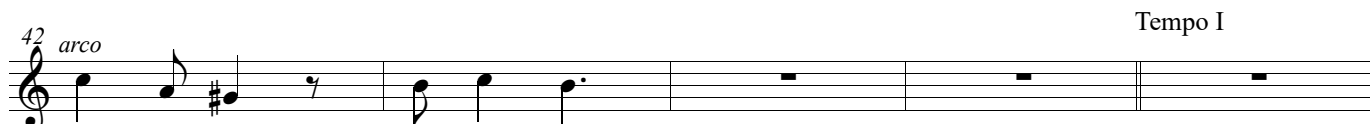
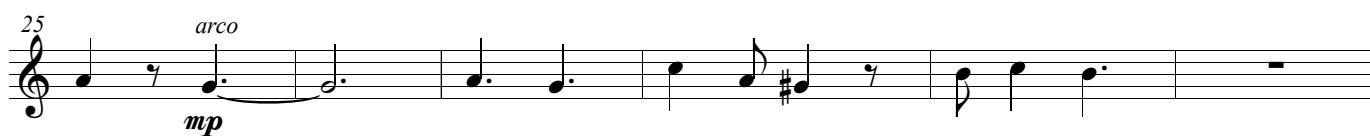
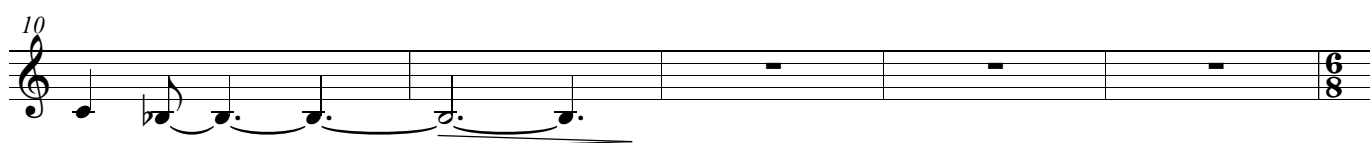
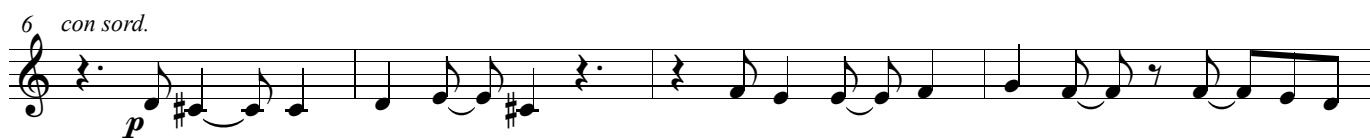
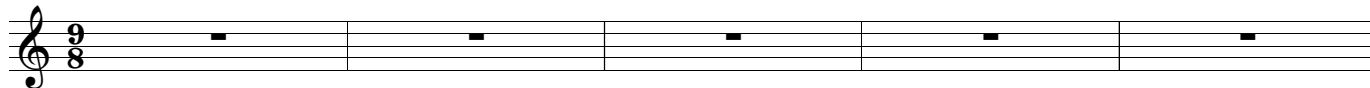
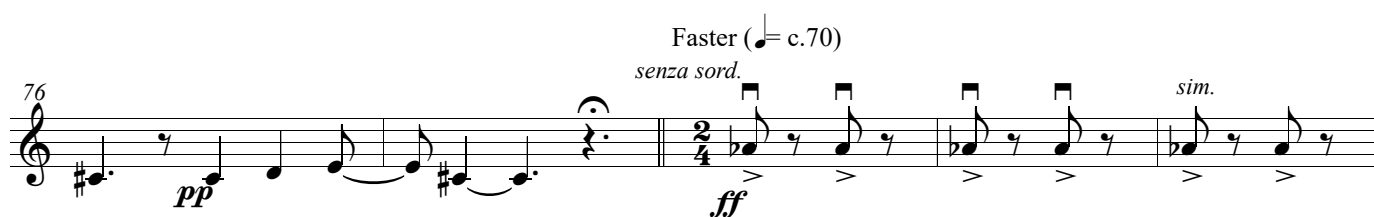


The Send Off, The End

Jeremy Rawson

Slowly (♩. = c.40)





111 *Tempo I* *con sord.*
mp

117

122 *p*

127 *pp*

131

The musical score for Violin 2 consists of five staves of music. The first staff (measures 111-116) begins with a treble clef, a key signature of one sharp (F#), and a 9/8 time signature. It contains a quarter note F#4, a quarter rest, and a quarter note G4. Measure 112 is a whole rest. Measure 113 is a double bar line. Measure 114 has a 6/8 time signature and a whole rest. Measure 115 is a whole rest. Measure 116 is a whole rest. The second staff (measures 117-121) begins with a treble clef, a key signature of one sharp (F#), and a 9/8 time signature. It contains a quarter note F#4, a quarter rest, and a quarter note G4. Measure 118 has a 6/8 time signature and a whole rest. Measure 119 is a whole rest. Measure 120 has a 9/8 time signature and contains a quarter note F#4, a quarter note G4, and a quarter note A4. Measure 121 has a 6/8 time signature and contains a quarter note F#4, a quarter note G4, and a quarter note A4. The third staff (measures 122-126) begins with a treble clef, a key signature of one sharp (F#), and a 9/8 time signature. It contains a quarter note F#4, a quarter note G4, and a quarter note A4. Measure 123 has a 6/8 time signature and contains a quarter note F#4, a quarter note G4, and a quarter note A4. Measure 124 has a 9/8 time signature and contains a quarter note F#4, a quarter note G4, and a quarter note A4. Measure 125 has a 6/8 time signature and contains a quarter note F#4, a quarter note G4, and a quarter note A4. Measure 126 has a 9/8 time signature and contains a quarter note F#4, a quarter note G4, and a quarter note A4. The fourth staff (measures 127-130) begins with a treble clef, a key signature of one sharp (F#), and a 9/8 time signature. It contains a quarter note F#4, a quarter note G4, and a quarter note A4. Measure 128 has a 6/8 time signature and contains a quarter note F#4, a quarter note G4, and a quarter note A4. Measure 129 has a 9/8 time signature and contains a quarter note F#4, a quarter note G4, and a quarter note A4. Measure 130 has a 6/8 time signature and contains a quarter note F#4, a quarter note G4, and a quarter note A4. The fifth staff (measure 131) begins with a treble clef, a key signature of one sharp (F#), and a 9/8 time signature. It contains a quarter note F#4, a quarter note G4, and a quarter note A4. The score ends with a double bar line.